

The background features a light gray grid pattern. Scattered throughout are various hand-drawn school supplies: a paper airplane in the top left, a pencil in the top center, a protractor in the top right, a ruler in the bottom center, and an apple in the bottom right. Large, soft-edged shapes in pink, yellow, and teal are also present. The text 'Welcome' is written in a simple, black, sans-serif font.

Welcome

# BACK TO SCHOOL

Pillars Preparatory Academy

2024 - 2025

# ADMIN TEAM

السلام عليكم



**Ms. Walaa Elbanna**  
**School Director**

- 20+ Years in Education
- Co-Founder of Pillars



**Dr. Farhat Ali**  
**Director of EC/ELEM**

- 20+ Years in Education, 15 in leadership
- Educational Research & Curriculum and Instruction
- Ed.D in Educational Leadership  
(Licensed Principal in NJ)



**Ms. Yasmeen Elsamra**  
**Director of M/H**

- 12 Years in Education
- 7th year at Pillars
- 4th year as MS/HS Head
- MA in Educational Leadership  
(Licensed Principal in NJ)







# OFFICE STAFF

Who to contact?

Ms. Noran Sharaf Director of Admissions	Admission (including tuition)	<a href="mailto:noran.sharaf@pillarsprep.com">noran.sharaf@pillarsprep.com</a>
Ms. Sharifa Albanna Billing Director	Non-Tuition Billing Questions (payments including: trips, uniform, lunch, etc)	<a href="mailto:billing@pillarsprep.com">billing@pillarsprep.com</a>
Ms. Marwa Elbayar Office Administrator	General Inquiries (B6T forms, lunch forms, sycamore, IXL, etc)	<a href="mailto:admin@pillarsprep.com">admin@pillarsprep.com</a>
ABSENCES EMAIL	Any Attendance Inquires	<a href="mailto:attendance@pillarsprep.com">attendance@pillarsprep.com</a>



# OUR CORE VALUES

## **Excellence/ Ihsan:**

Strive to be responsible, life-long learners, guided by their Islamic virtues.

## **Leadership or Servitude/ Qudwa or Ataa:**

Cultivate a strong sense of community involvement so that they will understand the value of making positive contributions to society, while proudly representing their Islamic identity.

## **Ummah Focus:**

Develop a strong belief in elevating the ummah, in social justice, and in embracing multiculturalism. Understand the importance of contributing to a school community with a sense of amanah.

## **Empathy/ Rahma:**

Embrace the Prophet's (SAW) saying that "none of you will enter Jannah until you love for your brother what you love for yourself" in actions and words.

# SICK POLICY

## 24 Hour Symptom Free

- Fever – 99.8 degrees or higher
- Vomiting & Diarrhea
- Hand – Foot – Mouth Disease: Your child can return 24 hours after they have no fever and all mouth sores and open blisters have healed.

## 48 Hour Symptom Free

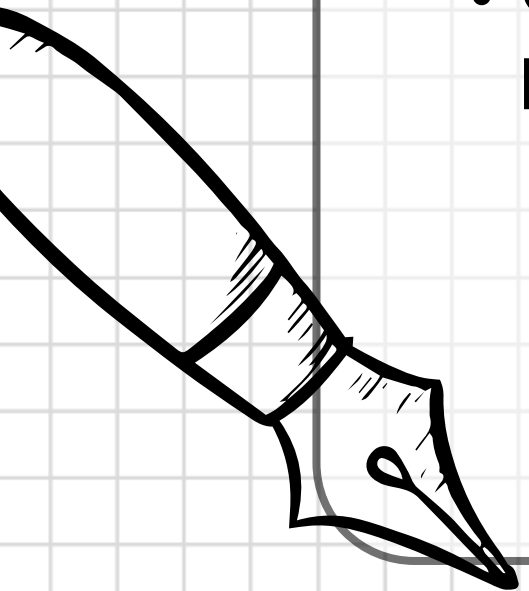
- **Head lice** – Your child must report to the nurse upon return.

## Use Discretion

- Common cold WITHOUT Fever – especially if it has kept the child awake at night.

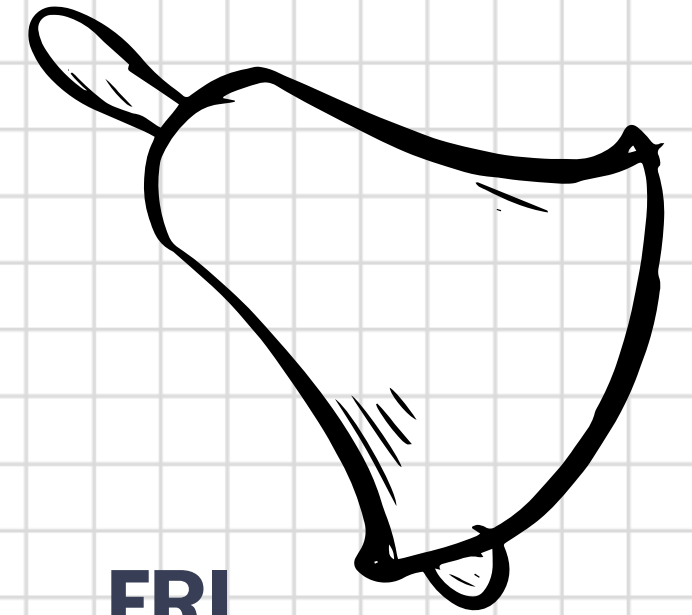
## 24 Hours after starting Antibiotic Treatment

- Strep Throat
- Pinkeye – The white of the eye appears red, swollen, burns, itches or has pus-like drainage.
- Impetigo – This is a skin rash that turns into fluid filled blisters, which can open and become runny or crusty. Your child may return to school after taking antibiotic treatment for 24 hours and the rash is no longer draining.





# OUR SCHOOL DAY



	MON	TUE	WED	THU	FRI
P1					
P2					
P3					
P4					
P5					



# SCHOOL HOURS

## **Nursery - Grade 1**

7:42 AM - 3:00 PM

## **Grade 2 - Grade 12**

7:42 AM - 3:12 PM

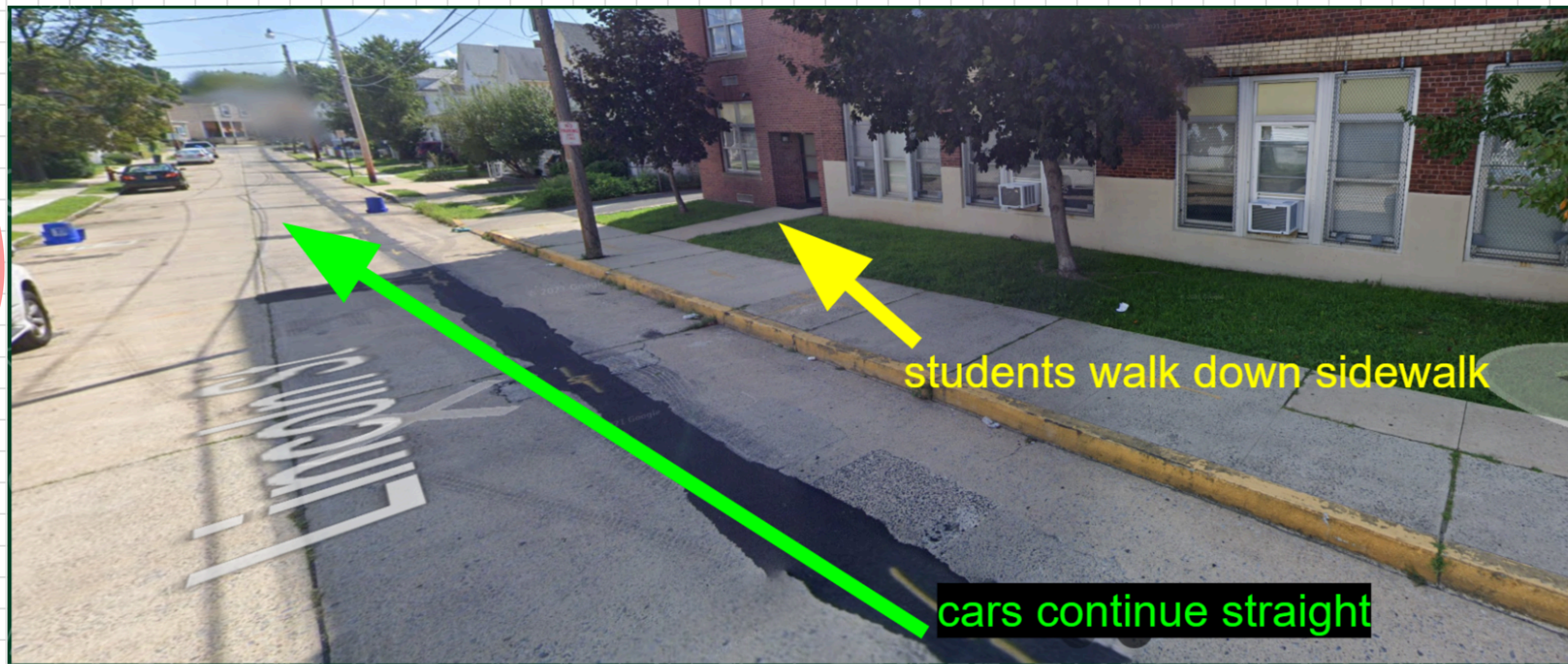
Before care is available  
upon request.

After care is until 6PM  
additional \$275/month

contact:  
[noran.sharaf@pillarsprep.com](mailto:noran.sharaf@pillarsprep.com)



# DROP OFF

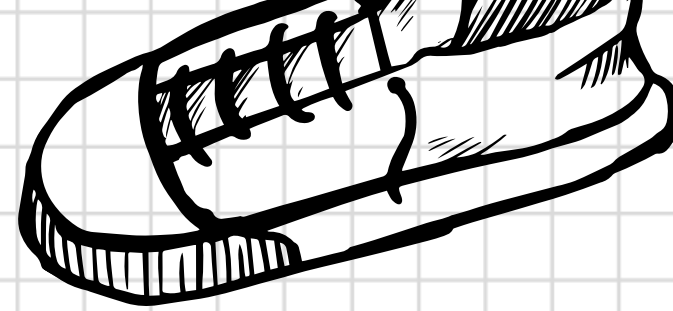




# **DROP-OFF IS A DRIVE-THROUGH PROCESS AT PILLARS**

- Drop off is at the side door located on Lincoln Street. To reduce traffic issues, families must be ready to move through this area quickly and efficiently.
- When your family comes close to drop off door, students in Grades 3+ should proceed quickly to the drop off door.
- Students in Grades 2 and below should remain in the car until a staff member directs them to leave the car.
- As soon as children are safely out of the vehicle, proceed immediately out of the drop off area.





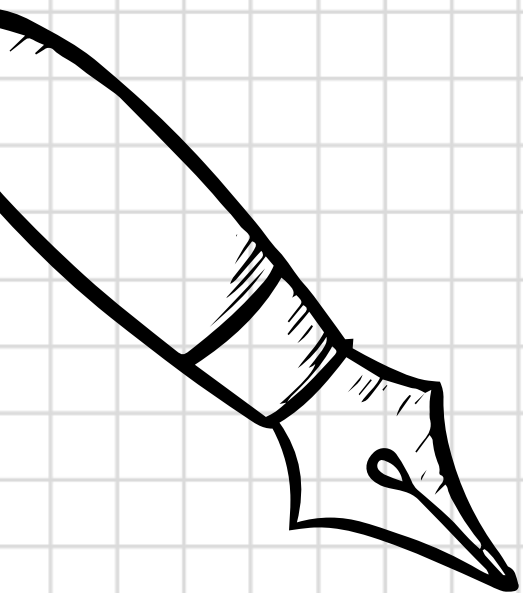
# TARDY

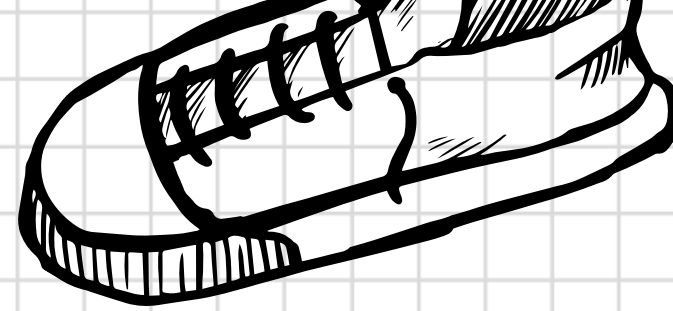
Students are marked TARDY after **7:55 AM**.

All doors will be **locked at 7:55 AM**

There will be no admittance from any door between 7:55 – 8:05 AM  
(due to morning adhkar).

Students will be admitted (late) from the Main Door beginning at 8:05 AM.

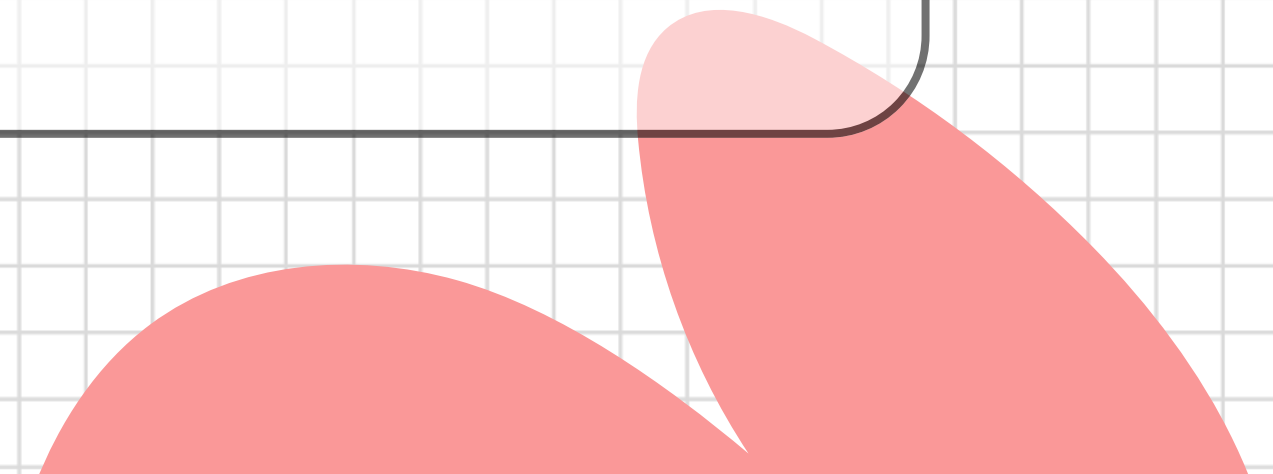
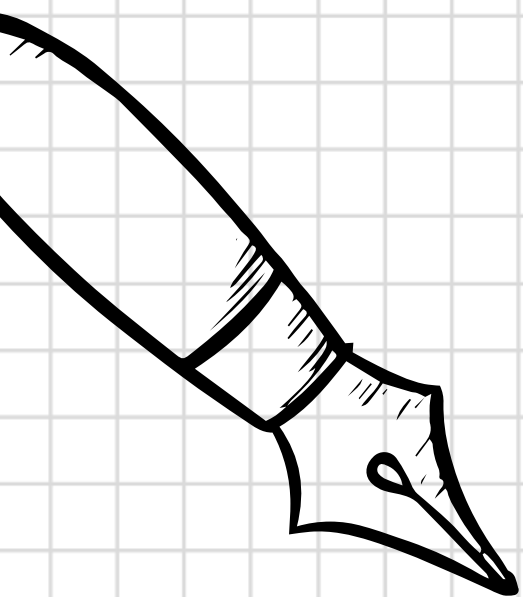




# TARDY

M/H students MUST take a pass from Mr.Riadh and then go straight to 1st period. They DO NOT stop by their lockers. After giving the pass to their 1st period teacher, they may ASK to go to their lockers.

Elementary students go straight to class.



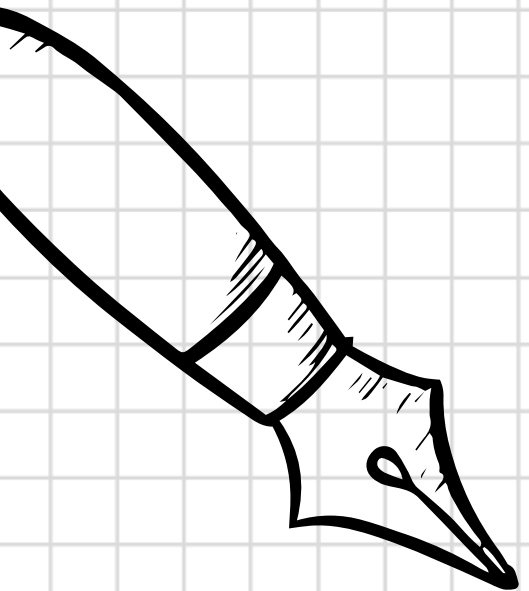


# LATE DROP OFF POLICY

If a student is late and is being dropped off after 7:55 AM, families are asked to drop off their student at the main door at 8:05 AM.

Cars cannot be “parked” or idle in front of the school building!

**(Cars will be ticketed by the SRPD!)**





# LATE – DROP OFF





**PICK UP**





# PICK UP TIMING

## **Nursery - Grade 1**

3:00 – 3:12 PM

## **Grade 2 - Grade 12**

3:12 – 3:35 PM

If your child is in Grade 2 – 12 please do not enter pick up line until 3:15 PM. Your child will not be dismissed early – we will ask you to leave the line and circle back.

# **PICK-UP IS A DRIVE-THROUGH PROCESS AT PILLARS**

- Families will be issued cards to display at pick-up time that informs staff which children they are picking up. You **MUST** hold up those pick up cards when driving through.
- A staff member will call your child and direct them to your car.
- Once your child is in the car, please proceed quickly and safely out of the pick up line.
- Please stay close to the curb to allow cars to pass on Lincoln Street



# DO NOT BLOCK!!!!







DO NOT park/idle on  
this street/sidewalk.







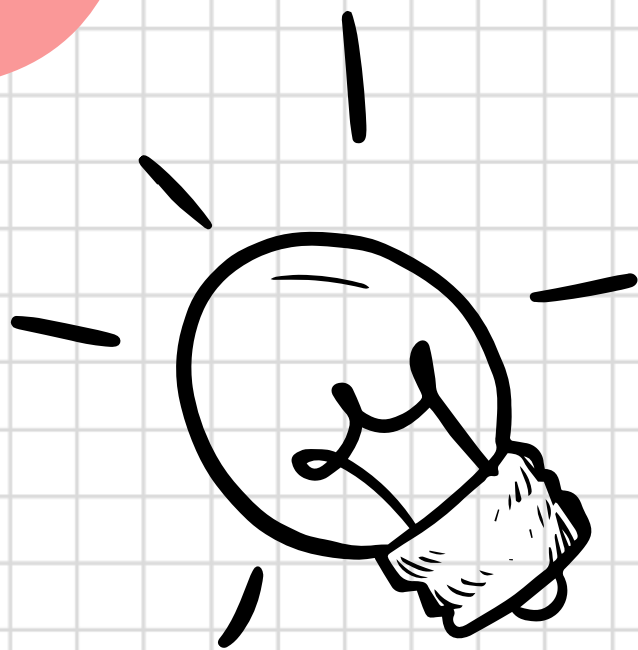
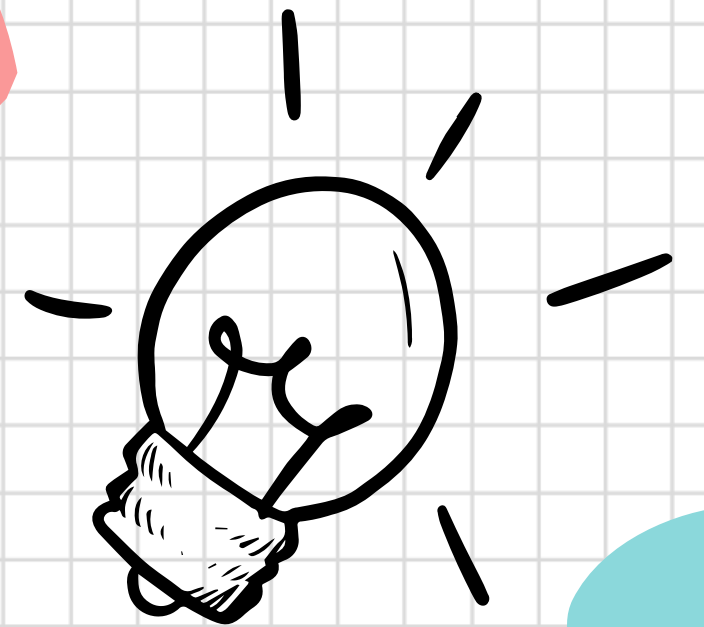
# EXITING THE PARKING LOT





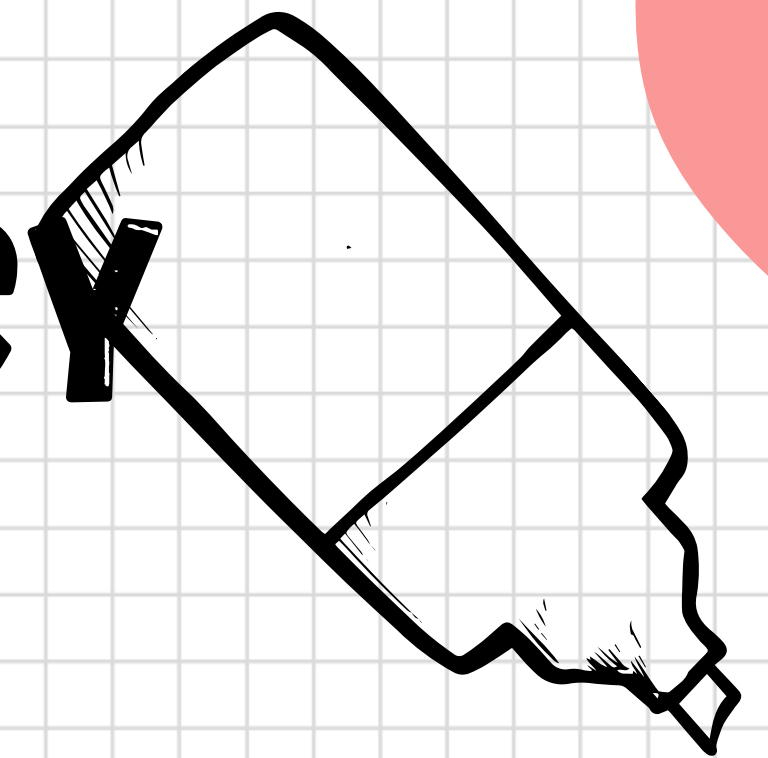
# **PICK UP AFTER 3:40**

Parents who pick up their students after 3:40 will  
be charged a \$30 late fee/day.  
The child will be sent to aftercare.





# ATTENDANCE POLICY



1

If your child will be absent you must email **attendance@pillarsprep.com** with name of child, child's grade, and reason for absence.

2

Excused absences will only be accepted with proper documentation.

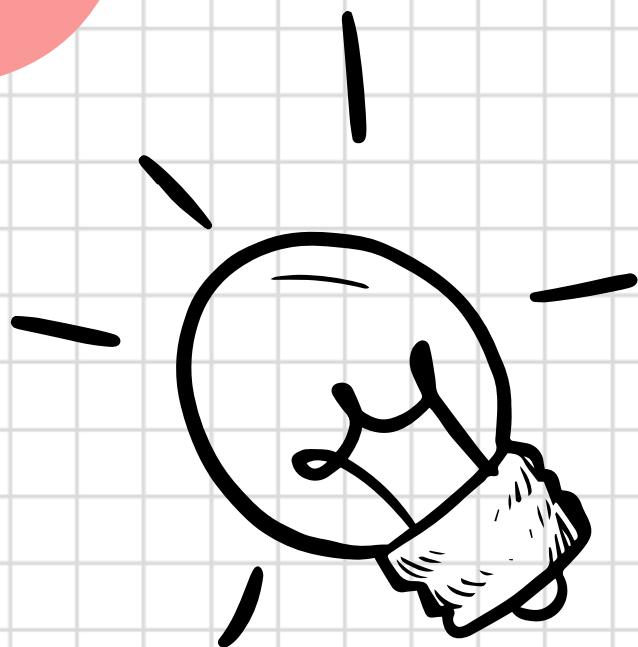
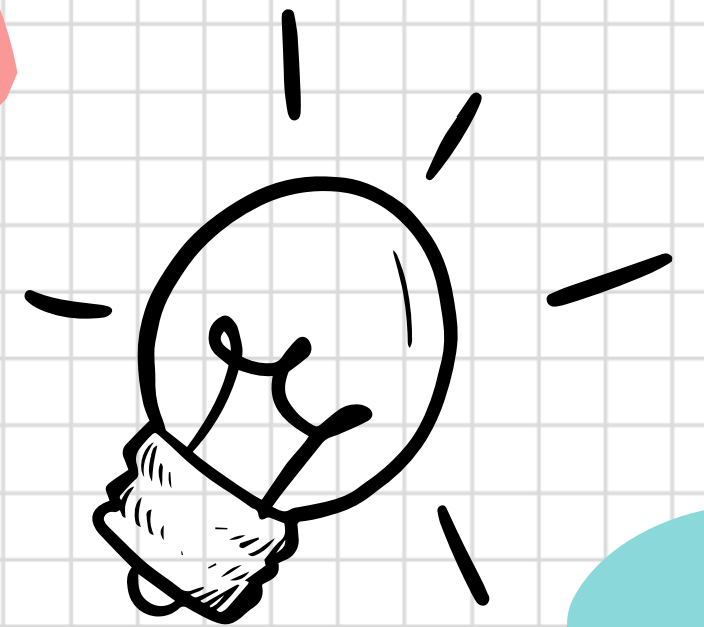
3

More information regarding the attendance policies can be found in the Student/Parent Handbook.

# NOTIFICATION SETTING

Check your email for attendance and grading  
updates soon!

You need to enable on your account.





# TRANSPORTATION ROUTES

## **Contact the Pillars Main Office**

- Staten Island - contact Pillars Main Office
- Union Masjid - contact Pillars Main Office
- Fords Masjid - contact Pillars Main Office

## **Contact the masjid directly**

- MCGP (Princeton)
- ICMC (Islamic Center of Monmouth County) AKA Masjid Al Aman

A graphic with a light gray grid background. The central text "SUMMER WORK & ASSESSMENTS" is in a bold, black, distressed font. Surrounding the text are various hand-drawn illustrations: a paper airplane with a dashed line showing its path, a pencil, a protractor, a hand holding a pencil, a ruler, and a red apple. There are also large, abstract shapes in pink, yellow, and teal.

# **SUMMER WORK & ASSESSMENTS**



# SUMMER WORK

Due: September 16, 2024

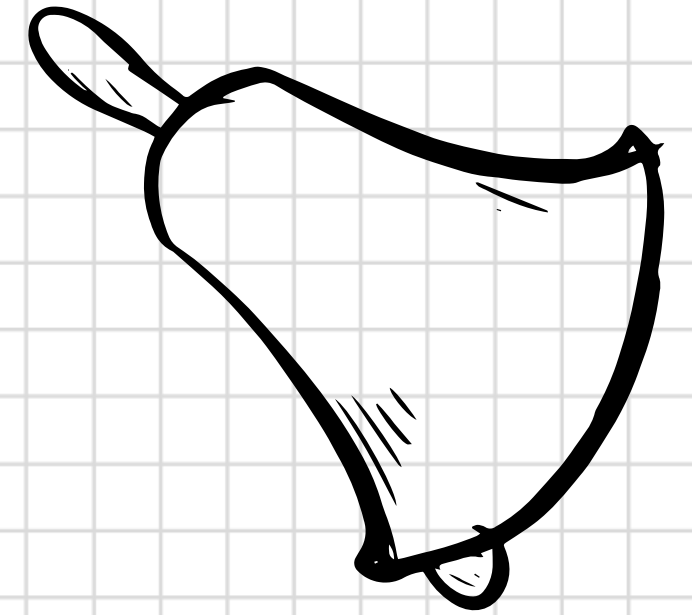
Extension for new students:  
October 14, 2024

3rd - 10th Grade: Mandatory for all  
subjects

11th + 12th Grade: Mandatory for  
Quran, Arabic, and Islamic Studies



# ASSESSMENTS



MAPS	PSAT	SAT	MIDTERMS/ FINALS
2x/year	PSAT 8/9	11/12th	G8-12
G1-10	PSAT 10	2x/year	Math
Reading	SAT 11	Mandatory this year	English
Language			Science
Math			History



# **SUPPLY LIST**

**Sent Via Email**

**Grade Level  
+ Art Supplies  
(one per family)**

**Supplies  
Incomplete?**

\$200 charge will be  
made if supplies are  
incomplete or not  
brought in



# UNIFORMS





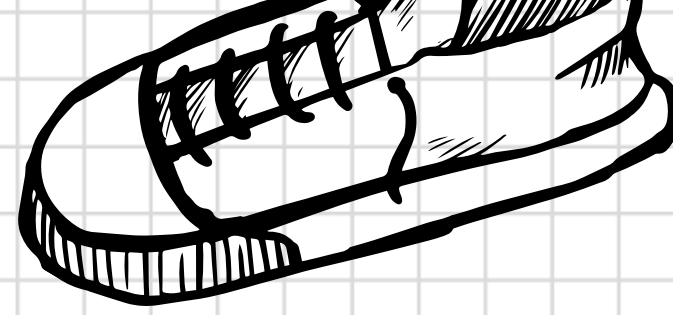


# ELEMENTARY UNIFORMS

---

**KG – 5<sup>th</sup> Grade**

**All uniforms must be purchased from the Lands End website.**

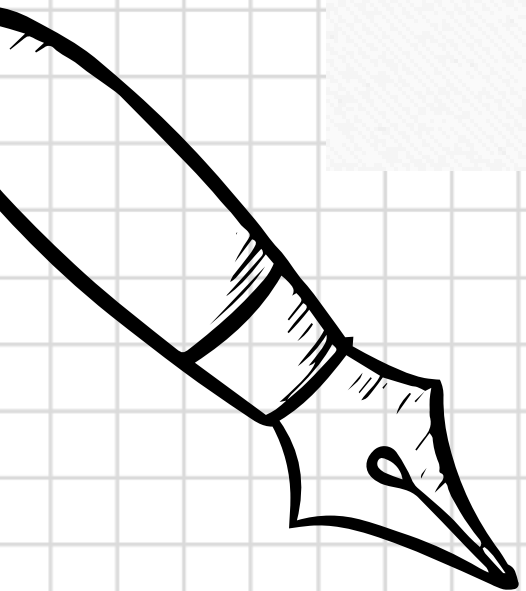


# Lands End Purchasing Instructions

---

**For K-5 Uniform Purchases.**

**For Boys 6-12 Uniform (non-gym) Purchases.**





Where to Buy Uniforms

LANDS' END

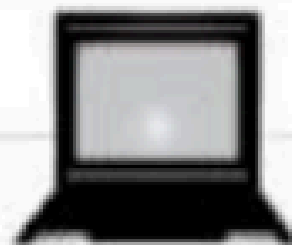
SCHOOL UNIFORM

800-469-2222 • [landsend.com/school](https://landsend.com/school)

PILLARS PREPARATORY ACADEMY

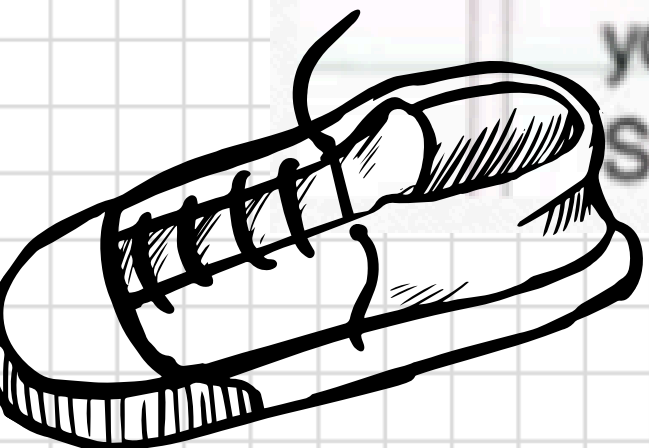
900170614

Lands' End: your school uniform source.



**Online:** Go to [landsend.com/school](https://landsend.com/school) and create or sign in to your account. Include your student and school information in My Account (or find your School using the Preferred School Number Search: 900170614).

Start shopping with your personalized product checklist.



Where to Buy Uniforms

LANDS' END

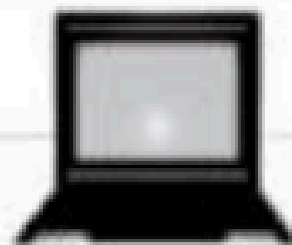
SCHOOL UNIFORM

800-469-2222 • [landsend.com/school](https://landsend.com/school)

PILLARS PREPARATORY ACADEMY

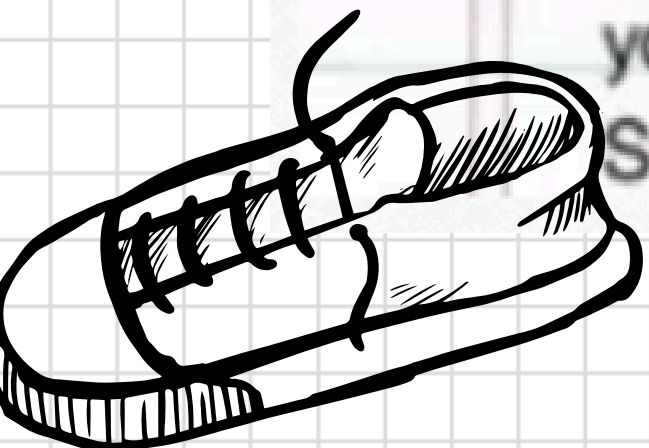
900170614

Lands' End: your school uniform source.



**Online:** Go to [landsend.com/school](https://landsend.com/school) and create or sign in to your account. Include your student and school information in My Account (or find your School using the Preferred School Number Search: 900170614).

Start shopping with your personalized product checklist.



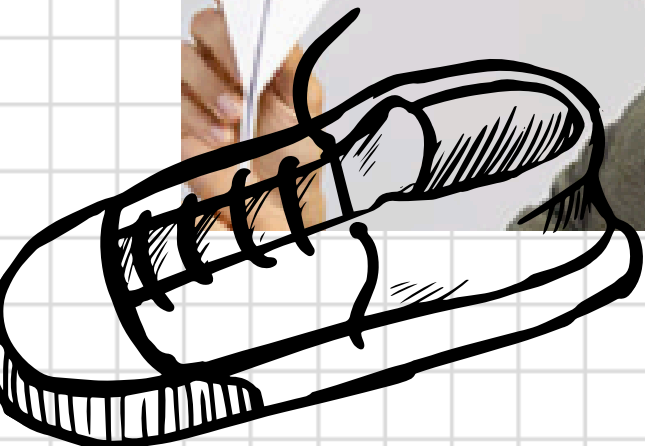




Find something new. [🔍](#)

[👤](#) Hi, Sign in  
MY ACCOUNT [▼](#)

[WOMEN](#) [MEN](#) [KIDS](#) [SWIM](#) [OUTERWEAR](#) [SCHOOL](#) [HOME](#) [SALE](#) [TRACK ORDER](#) |

[FIND YOUR SCHOOL >](#)[SHOP ALL SCHOOL UNIFORMS >](#)[SHOP POLO SHIRTS >](#)[SHOP OUTERWEAR >](#)[KIDS SHOES & BOOTS >](#)[LET'S GET COMFY](#)[Activewear](#)[BACKPACKS FOR SCHOOL >](#)[Kids' Preschool Backpacks](#)  
[Kids' Elementary School Backpacks](#)  
[Kids' Middle School Backpacks](#)[SHOP BY AGE RANGE](#)[Toddler](#)  
[Little Kid](#)  
[Big Kid](#)  
[Adult](#)[GIRLS & WOMEN](#)[Shop All School Uniforms](#)  
[Accessories](#)  
[Activewear](#)  
[Adaptive Clothing](#)  
[Blazers](#)  
[Capris & Crops](#)  
[Coats & Jackets](#)  
[Dresses & Jumpers](#)  
[Fleece](#)  
[Pants](#)  
[Polos](#)  
[Shoes & Boots](#)  
[Shorts](#)  
[Skirts & Skorts](#)  
[Socks & Hosiery](#)  
[Sweaters](#)  
[Tops](#)[BOYS & MEN](#)[Shop All School Uniforms](#)  
[Accessories](#)  
[Activewear](#)  
[Adaptive Clothing](#)  
[Blazers](#)  
[Coats & Jackets](#)  
[Dress Shirts](#)  
[Fleece](#)  
[Pants](#)  
[Polos](#)  
[Shoes & Boots](#)  
[Shorts](#)  
[Socks](#)  
[Sweaters](#)  
[Tops](#)  
[SALE & CLEARANCE >](#)  
[SHOP FACE MASKS >](#)

## By School Address

School Name

Pillars Prep Academy

Location

in United States/US Territories

City

South River

State

New Jersey

CANCEL

SEARCH BY ADDRESS

**PILLARS**  
PREPARATORY ACADEMY

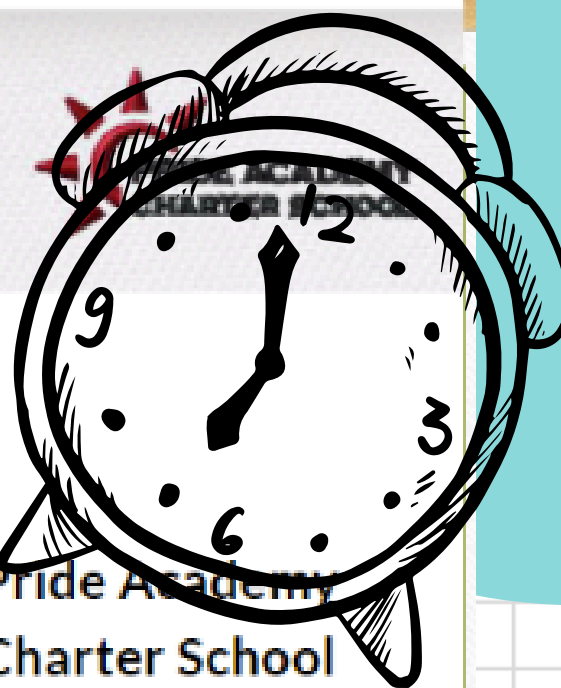
Pillars Preparatory  
Academy  
34 Charles St  
South River, NJ

SELECT SCHOOL

**MKA**

Montclair Kimberley  
Academy Upper  
School  
6 Lloyd Rd  
Montclair, NJ

SELECT SCHOOL



Pride Academy  
Charter School  
117 Elmwood Ave  
East Orange, NJ

SELECT SCHOOL



**PRINCETON**  
ACADEMY  
OF THE SACRED HEART

Princeton Academy



**NOBLE**  
LEADERSHIP  
ACADEMY

Noble Leadership

**MKA**

Montclair Kimberley





## SCHOOL UNIFORMS

Find your school's dress code:

### By School Number

School Number

900170614

(e.g. 912345671, no hyphens)

CANCEL

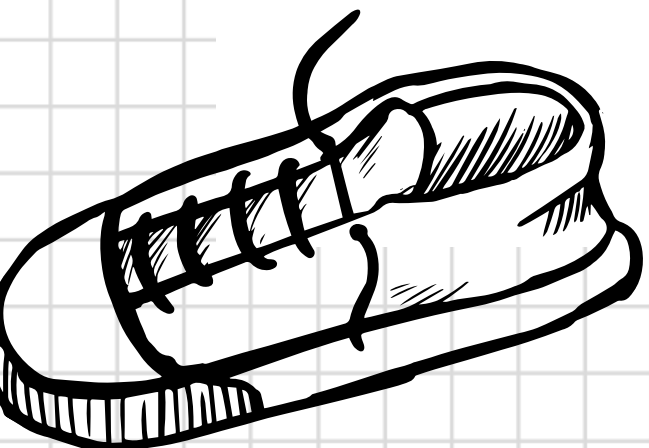
SEARCH BY NUMBER

### By School Address

### Already have a School Uniform Student?

- Access Your School & Student Info
- Shop Your School's Dress Code
- Checkout Faster
- View Order History

SIGN IN





Find something new.



Hi, Sign in  
MY ACCOUNT

BAG

WOMEN

MEN

KIDS

SWIM

OUTERWEAR

SCHOOL

HOME

SALE

TRACK ORDER

HELP

## By School Address

School Name

Pillars Prep Academy

Location

in United States/US Territories

City

South River

State

New Jersey

CANCEL

SEARCH BY ADDRESS

## Who are you shopping for?

Select a gender then grade to continue.

First Name

(Optional)

Gender

☒ Girl / Woman

☐ Boy / Man

Grade/Status

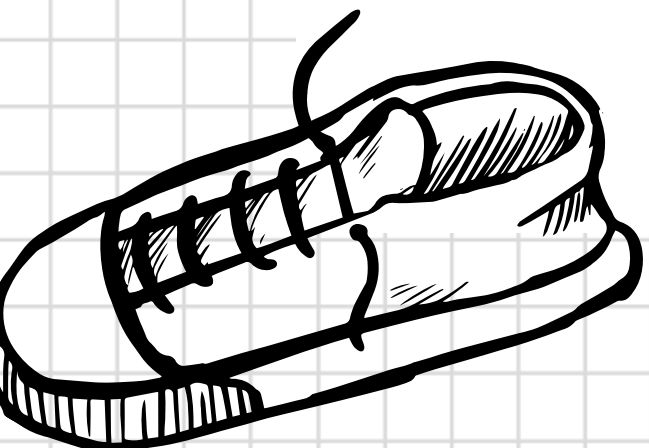
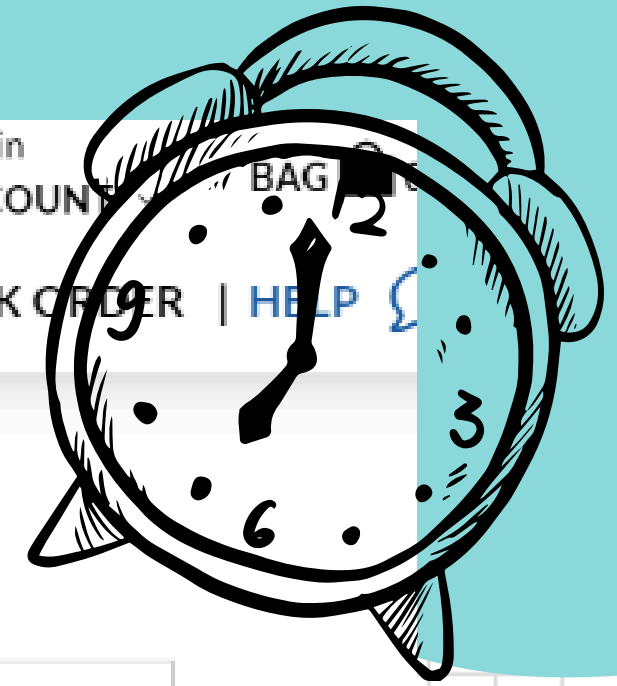
Grade 8

Save to my account for future visits.

CANCEL

SAVE SCHOOL

I prefer not to save this information beyond today's visit. [Shop Now](#)







Find something new.



Hi, Sign in  
MY ACCOUNT

BAG

WOMEN

MEN

KIDS

SWIM

OUTERWEAR

SCHOOL

HOME

SALE

TRACK ORDER

HELP

## By School Address

School Name

Pillars Prep Academy

Location

in United States/US Territories

City

South River

State

New Jersey

CANCEL

SEARCH BY ADDRESS

## Who are you shopping for?

Select a gender then grade to continue.

First Name

(Optional)

Gender

☒ Girl / Woman

☐ Boy / Man

Grade/Status

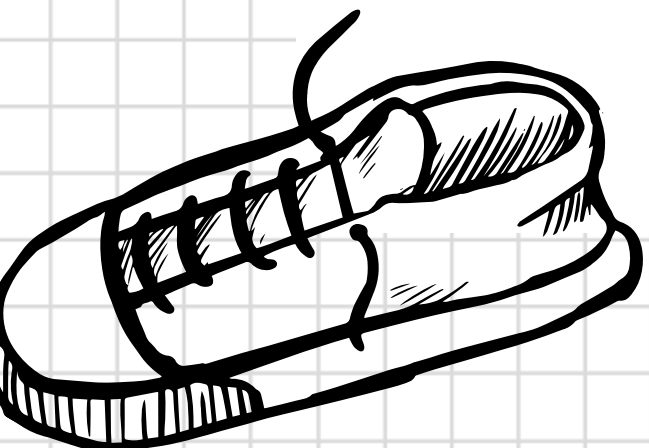
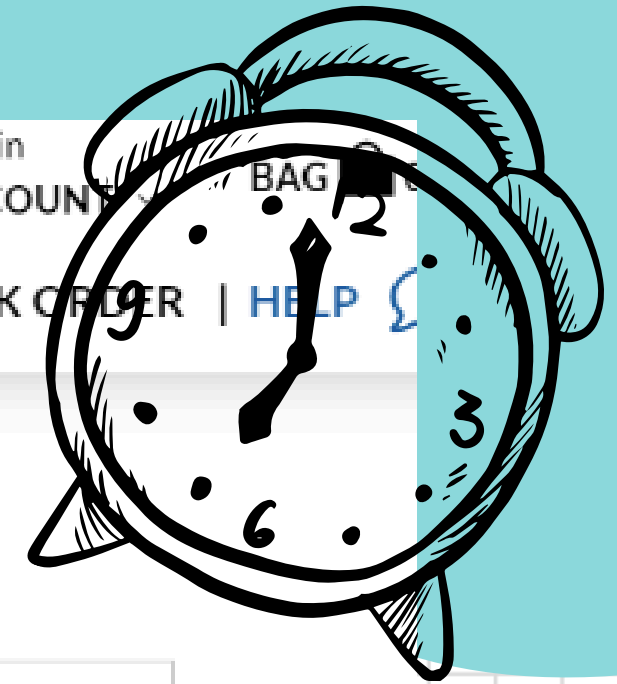
Grade 8

Save to my account for future visits.

CANCEL

SAVE SCHOOL

I prefer not to save this information beyond today's visit. [Shop Now](#)



# Uniforms for Boys (KG – 5)

Standard Uniform



Gym Uniform





# Uniforms for Boys (KG – 5)

Standard Uniform

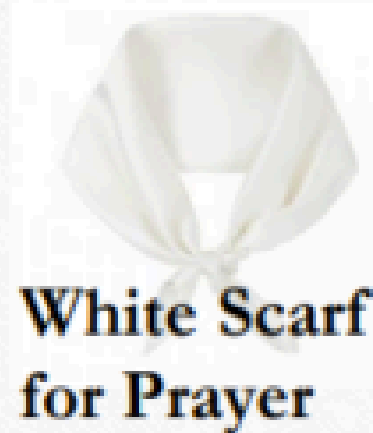


Gym Uniform



# Uniforms for Girls (KG - 3)

## Standard Uniform



## Gym Uniform





# Uniforms for Girls (4th & 5th)

**\* Hijab mandatory beginning 5<sup>th</sup> grade**

Standard Uniform

Gym Uniform



White Scarf  
for Prayer



# Dress - Up Friday (Jummah)

---

Fridays are Dress-Up days at Pillars. Students can come in:

- Islamic attire (abayas, dresses, kaftans, etc).
- Standard Uniforms

\* Please note that Gym Uniforms are not permitted on Fridays.



# MS/HS UNIFORMS

---

6<sup>th</sup> – 12<sup>th</sup> Grade

All **BOYS** standard uniforms must be purchased from the Lands End website.

All **BOYS** gym uniforms must be purchased through Pillars.

All **GIRLS** standard and gym uniforms must be purchased through Pillars.

# Uniform Purchase through Pillars

---

Use this form: <https://forms.gle/tz87wwAHYwXChHjA6>



# Uniforms for Middle School Boys (6 – 8)

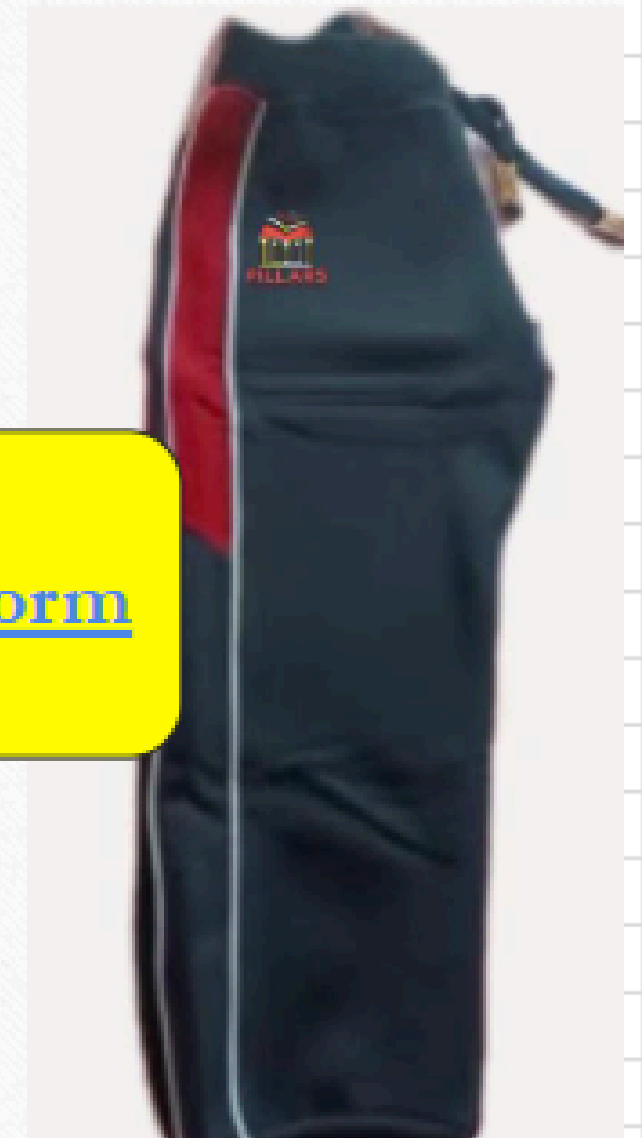
## Standard Uniform



**No Polo  
Shirts on  
Fridays!**

- Standard Uniform - Purchase from Lands End

## Gym Uniform

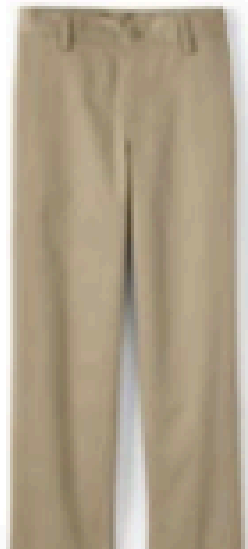


[Order Form](#)

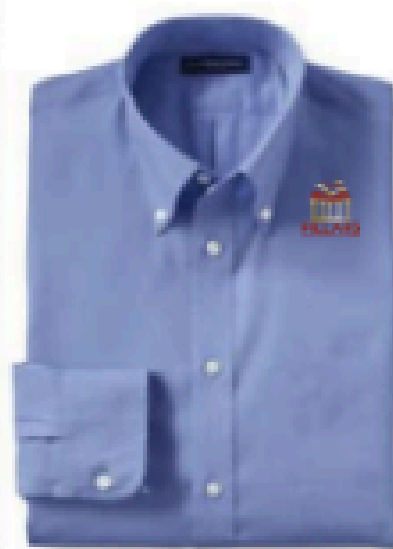
- Gym Uniforms - Purchase from Pillars

# Uniforms for High School Boys (9-12th)

## Standard Uniform



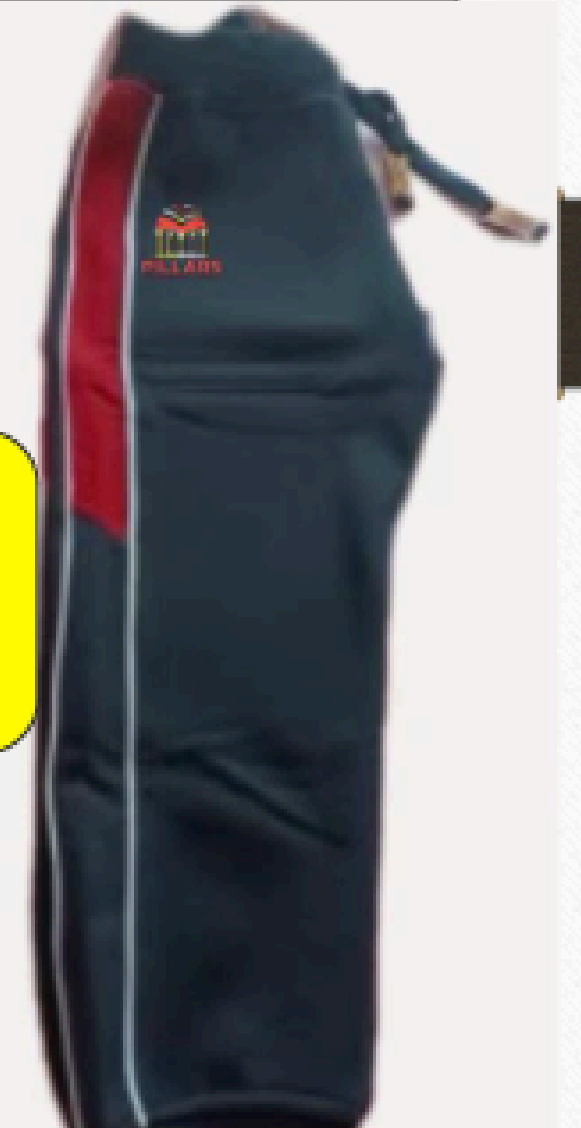
**No Polo  
Shirts on  
Fridays!**



## Gym Uniform



[Order Form](#)



- Standard Uniform - Purchase from Lands End
- Seniors are exempt from the standard uniform
- Gym Uniforms - Purchase from Pillars
- Seniors are NOT Exempt from the Gym Uniform



# Middle and High School Boys (6-12)

## Dress - Up Friday (Jumma)

**Kaftans**



**OR**

**Blue Button Down  
with Khaki Pants**



- Uniform pants with a blue dress shirt OR Kaftan IS Acceptable on Fridays!
- No other form of clothing is permitted on Fridays! **NO GYM UNIFORMS!**

# Uniforms for Middle School Girls (6th - 8th)

**\* Hijab mandatory beginning 5<sup>th</sup> grade**

## Standard Uniform

- Gray Skirt
- Blue Shirt w/logo
- Blue Hijab (Jersey or Chiffon)
- Navy Zip-up Jacket w/logo

[Order Form](#)



# Uniforms for High School Girls (9th - 12th)

**\* Hijab mandatory beginning 5<sup>th</sup> grade**

## Standard Uniform

- Gray Skirt
- Black Shirt with logo
- Taupe Hijab (Jersey or Chiffon)
- Navy Zip-up Jacket w/logo

[Order Form](#)



**Seniors are exempt from the standard uniform**

## Gym Uniform



**Seniors are NOT Exempt from the Gym Uniform**



# Middle and High School Girls (6-12)

## Dress - Up Friday (Jummah)

---

Fridays are Dress-Up days at Pillars.

Students can come in:

- Islamic Attire (abayas, dresses, skirts, etc).
- Standard Uniforms

NOT permitted on Dress-Up Fridays:

- pants of any type
- Gym Uniforms

# Violations of the School Uniform

---

- **Wearing open toe/back shoes**
    - Crocs/similar footwear are a violation of the school uniform
  - **Hijab not properly covering neck**
    - pins must be worn on hijabs
  - **Earrings showing through/on hijab**
  - **Makeup**
  - **Nails/Nail Polish**
- 
- **Please note that these are just some examples of school uniform violations**

# School Uniform Violations

<b>1st Violation</b>	Email Home
<b>2nd Violation</b>	* phone call (no answer - email) * \$10 fine + purchase of uniform correction
<b>3rd Violation</b>	* phone call (no answer - email) * \$15 fine + purchase of uniform correction * parent meeting required
<b>4th Violation</b>	* phone call (no answer - email) * \$20 fine + purchase of uniform correction * next day student in-school suspension
<b>All Violations:</b> Students will be subject to purchasing a new uniform (or part of the uniform that they are missing) on the day of the violation for an immediate correction.	



# School Uniform Violations

<b>1st Violation</b>	Email Home
<b>2nd Violation</b>	<ul style="list-style-type: none"><li>* phone call (no answer - email)</li><li>* \$10 fine + purchase of uniform correction</li></ul>
<b>3rd Violation</b>	<ul style="list-style-type: none"><li>* phone call (no answer - email)</li><li>* \$15 fine + purchase of uniform correction</li><li>* parent meeting required</li></ul>
<b>4th Violation</b>	<ul style="list-style-type: none"><li>* phone call (no answer - email)</li><li>* \$20 fine + purchase of uniform correction</li><li>* next day student in-school suspension</li></ul>
<b>All Violations:</b> Students will be subject to purchasing a new uniform (or part of the uniform that they are missing) on the day of the violation for an immediate correction.	



# **DON'T HAVE THE UNIFORM**

If your child's uniform has been backordered or is still being shipped .

## **KG - 5**

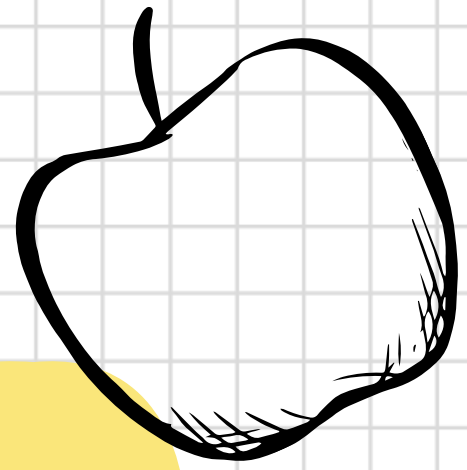
Please have your child wear:

- Girls: blue pants and a red shirt
- Boys: khaki pants and a gray polo
- GOAL: be as close to the uniform as possible

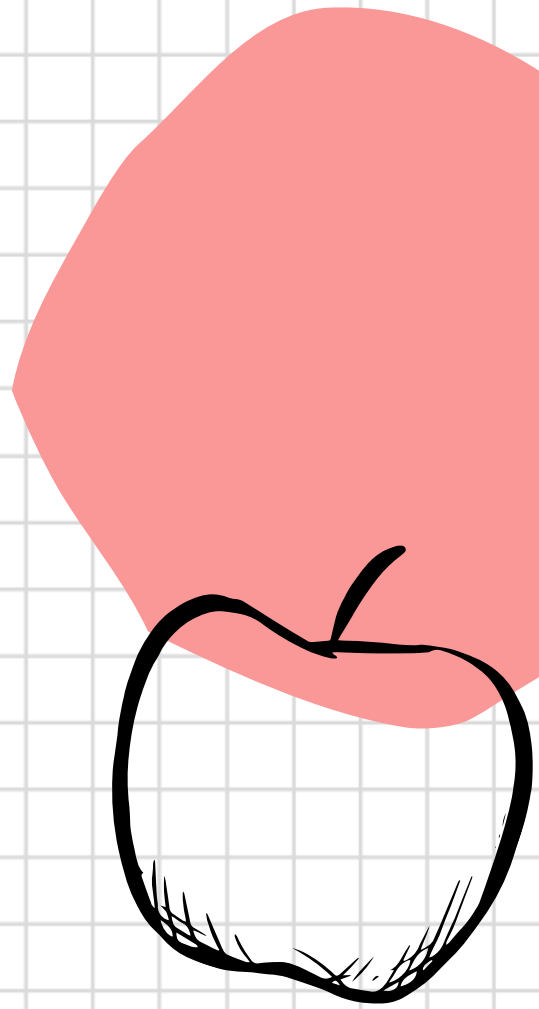
## **M/H**

Please have your child wear:

- Girls: skirt or blue/black abaya
- Boys: khaki pants and a gray polo
- GOAL: be as close to the uniform as possible



# SNACKS & LUNCHES



Breakfast is important to help students stay focused.

Lunches should be nutritionally balanced and enjoyable.

Lunch/snack needs to be brought in every day

3 food groups (vegetables, fruits, grains, protein and dairy/calcium-rich foods)





# ORDERING LUNCH

Lunch is available for purchase and will begin on **September 30th**

Lunch order forms will go out bi-monthly

1st Order form will be sent out in the last 2 weeks of September

Lunch sales start in October

**September:**  
students must bring their own lunches.

We are a **PEANUT FREE** school



# **NO ORDERING FOOD!!!**

If your child does not have lunch?

**No ordering (door dash, Uber eats, etc!**

**Parents and students included!**

If there is a day that you forgot or something happened, CALL THE MAIN OFFICE

# SOME SCHOOLWIDE POLICIES

## Cell Phones

All grade levels - HAND IN Phones during Homeroom.

It is recommended that students younger than sixth grade refrain from bringing phones to school.

## Birthdays

We DO NOT celebrate birthdays at Pillars.

If you would like to bring something in for your child's class, you can bring in a Jummah treat (cupcakes, goodie bags, etc).

We ask that you refrain from bringing in food (such as pizza) on Fridays.

## Jummah Treats

Fridays are special - in accordance with the Sunnah.

Please contact your child's homeroom teacher to coordinate sending in a Jummah treat (cupcakes, fruit, stickers, etc).

We ask that Jummah treats are **small and simple** items.



# ACADEMIC COMMUNICATIONS

## Sycamore

- EC/Elem School ID: 3749
- M/H School ID: 4217
- Trouble with your account?  
email: [admin@pillarsprep.com](mailto:admin@pillarsprep.com)

## Class Dojo

Notifications for  
PS-KG

## Google Classroom

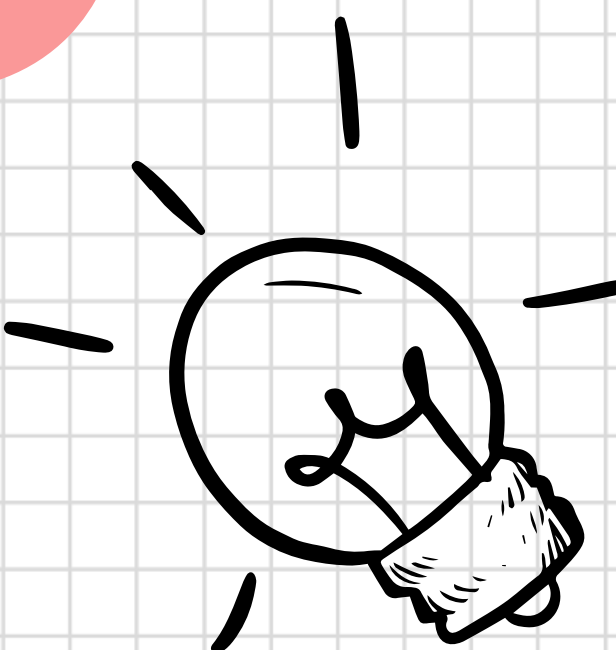
Notifications and  
assignments for 1st  
- 12th Grade

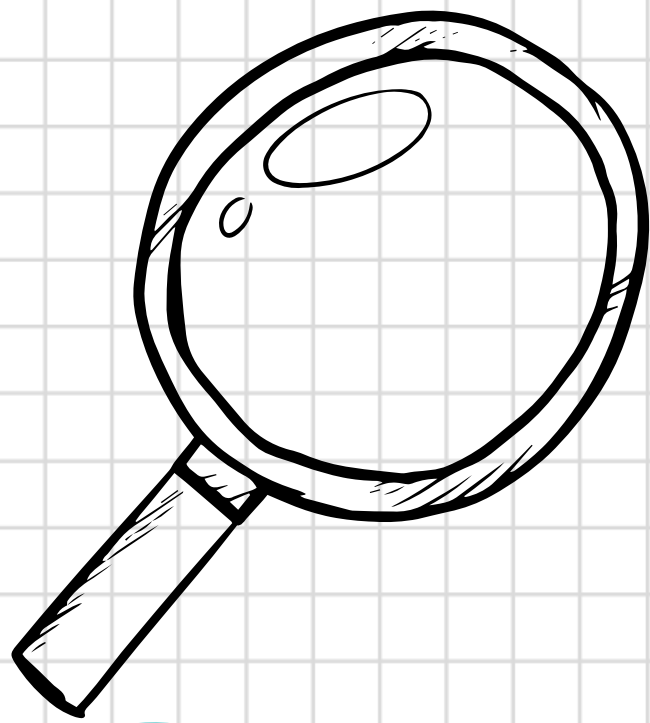
- must use Pillars  
EMAIL



# **STUDENT/PARENT HANDBOOK**

Please check your email and sign the Student/Parent Handbook. Students must bring in signed acknowledgement by Thursday.





# 11/12 GRADE NOTE

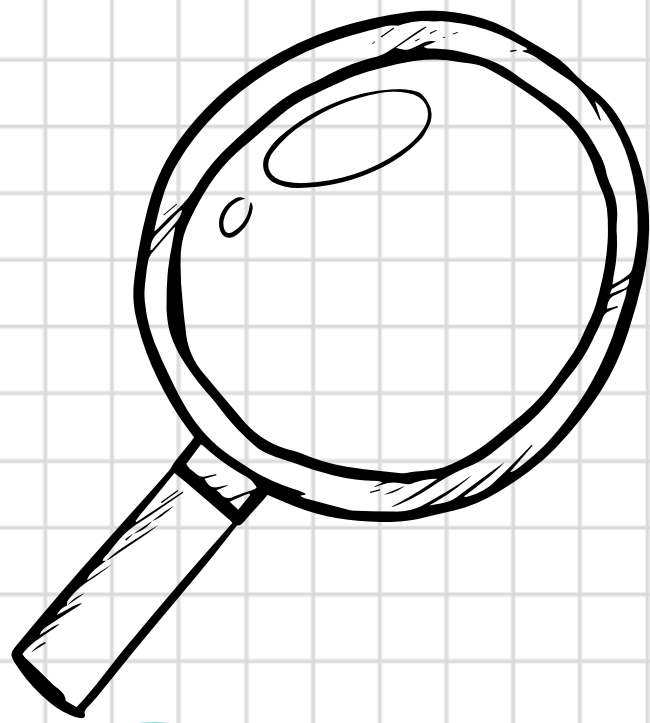
## MCC Cohort

- MCC campus on Tues + Thurs
- NO school on Fridays
  - one class (elective) log in on zoom

## Pillars Cohort

- all classes in person at Pillars
- Physics + Precalc





# SUPPORT TABLES

## **Ms. Marwa Office Administrator**

Help with any difficulties  
getting into:

- sycamore
- ixl
- etc

## **Ms. Sara Elsehetry Licensed Mental Health Counselor**

- former Pillars employee
- provides support for families
- check if she accepts your insurance



# **A WORD FROM OUR ADMIN SUPPORT STAFF**



# ADMIN SUPPORT STAFF



**Ms. Farheen Khan**  
**School Counselor**

- B.A. in Psychology
- Masters in Education
- Certifications in:
  - \*Teaching grades K-6
  - \*ESL grades K-12
  - \*Islamic psychology
- Doctor of Education (coming up inshAllah!)
- Over 15 years of experience in the field of education
- 2nd year at Pillars Prep



**Mr. Riadh Saadallah**  
**Dean of Discipline and School Culture**

- B.A in History
- 5 years in education
- 2nd year in Pillars Prep



# SCHOOL COUNSELOR

- Student support
- Parent support

Email:  
farheen.khan@pillarsprep.com

Phone:  
732-390-4200, ext. 104

## Student support includes:

- Social-emotional support
- Academic support
  - College prep
  - College applications
  - Standardized testing
  - High School Scholars Program

## Parent support includes:

- “Ask the Counselor” Zoom sessions (2nd Thursday of every month, starting Oct) - parents can ask any questions about parenting challenges that they are facing
- Parenting workshops on special topics throughout the school year

# DEAN OF DISCIPLINE & SCHOOL CULTURE

In our rapidly changing world, Islamic schools play a crucial role in helping Muslim youth preserve and strengthen their identity .

## Tarbiyyah

Student behavior with :  
Other Students  
Teachers  
Staff

Ensuring school rules are followed.  
Correct and discipline misbehavior  
using the Discipline Rubric.

MS/HS DISCIPLINE RUBRIC			
2024-2025			
CATEGORY 1	First Violation	Second Violation	Third Violation
• Absence to class • Inappropriate language (flirt) • Disrespectful behavior • Being disrespectful	• Verbal warning and return student to change behavior • 1st Conference	• Written Detention • 2nd Conference	• After School Detention • Administrative Call home • Conference with Counselor
CATEGORY 2	First Violation	Second Violation	Third Violation
• Cheating (theft of materials) • Dressing inappropriately • Dressing Class • Dressing Inappropriately • Dressing Inappropriately • Dressing Inappropriately • Dressing Inappropriately • Dressing Inappropriately • Dressing Inappropriately	• Verbal warning • 1st Conference • 2nd Conference (if not a suspension)	• Written Detention • Administrative Call home • Conference with Counselor • Cheating/Plagiarism: 1	• After School Detention • Administrative Call home • Conference with Counselor • Cheating/Plagiarism: 2
CATEGORY 3	First Violation	Second Violation	Third Violation
• Inappropriate behavior between • Inappropriate behavior between • Inappropriate behavior between • Inappropriate behavior between • Inappropriate behavior between • Inappropriate behavior between • Inappropriate behavior between • Inappropriate behavior between	• 1-2 day In-School Suspension • Administrative Call home • Conference with Counselor	• 3-4 day In-School Suspension • Administrative Call home • Conference with Counselor • Conference with Counselor	• 5-6 day In-School Suspension • Administrative Call home • Conference with Counselor • Conference with Counselor
CATEGORY 4	First Violation	Second Violation	Third Violation
• Bullying/Cyberbullying • Bullying/Cyberbullying • Bullying/Cyberbullying • Bullying/Cyberbullying • Bullying/Cyberbullying • Bullying/Cyberbullying • Bullying/Cyberbullying • Bullying/Cyberbullying	• 3-4 day In-School Suspension • Administrative Call home • Conference with Counselor • Conference with Counselor • Conference with Counselor • Conference with Counselor • Conference with Counselor • Conference with Counselor	• 5-6 day In-School Suspension • Administrative Call home • Conference with Counselor • Conference with Counselor • Conference with Counselor • Conference with Counselor • Conference with Counselor • Conference with Counselor	• 7-10 day In-School Suspension • Administrative Call home • Conference with Counselor • Conference with Counselor • Conference with Counselor • Conference with Counselor • Conference with Counselor • Conference with Counselor
CATEGORY 5	First Violation	Second Violation	Third Violation
• Cheating • Cheating • Cheating • Cheating • Cheating • Cheating • Cheating • Cheating	• 1-2 day In-School Suspension • Administrative Call home • Conference with Counselor	• 3-4 day In-School Suspension • Administrative Call home • Conference with Counselor • Conference with Counselor	• 5-6 day In-School Suspension • Administrative Call home • Conference with Counselor • Conference with Counselor

Developing a positive/  
welcoming School Culture  
**Foster a culture where our core  
values are deeply internalized and  
lived by.**

- Excellence/ Ihsan
- Leadership or Servitude
- Ummah Focus
- Empathy/ Rahma

# DEAN OF DISCIPLINE & SCHOOL CULTURE

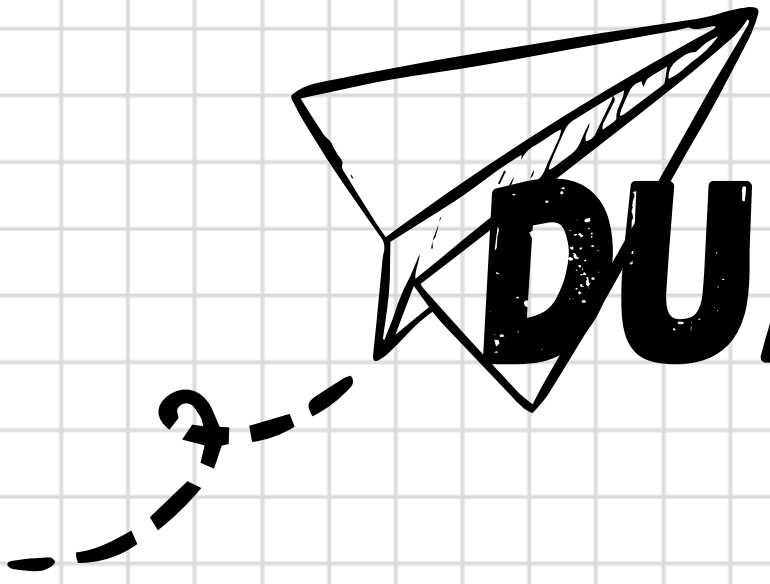
كُنْتُمْ خَيْرَ أُمَّةٍ أُخْرِجَتْ لِلنَّاسِ تَأْمُرُونَ بِالْمَعْرُوفِ  
وَتَنْهَوْنَ عَنِ الْمُنْكَرِ وَتُؤْمِنُونَ بِاللَّهِ وَلَوْ  
ءَامَنَ أَهْلُ الْكِتَابِ لَكَانَ خَيْرًا لَهُمْ مِّنْهُمْ  
الْمُؤْمِنُونَ وَأَكْثَرُهُمُ الْفَاسِقُونَ ﴿١١﴾



**A WORD FROM OUR  
PTO -  
MAI KORA IEM**



**MAY ALLAH BLESS  
THIS SCHOOL  
YEAR**



# DUAA FROM SH MAMDOUH



## **Sh Mamdouh**

- full time this year
- with Pillars since it started - 10 years!



explain the schedules for the day

explain if more than one student - how to follow schedule

student chromebooks

# Follow Us!

Instagram



[www.instagram/pillarsprep](https://www.instagram.com/pillarsprep)

Facebook



[www.facebook/pillarsprep](https://www.facebook.com/pillarsprep)